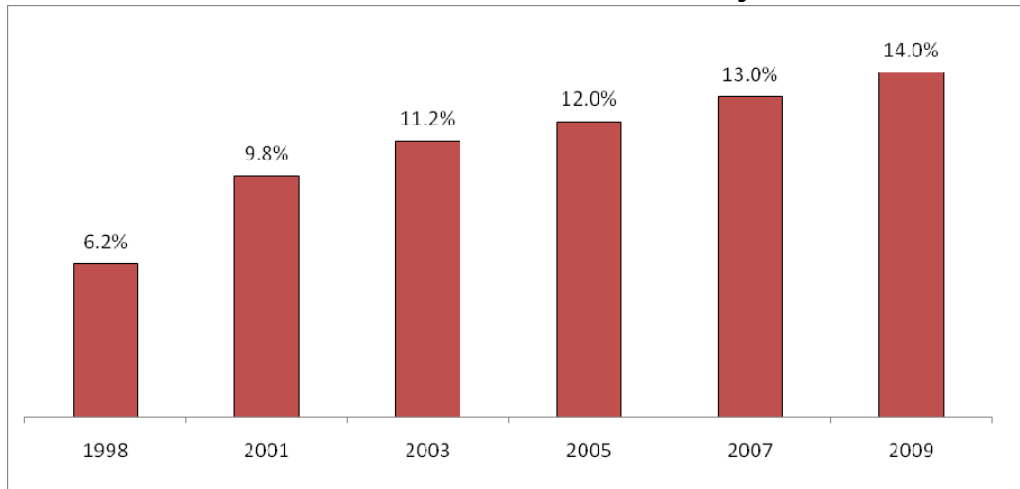
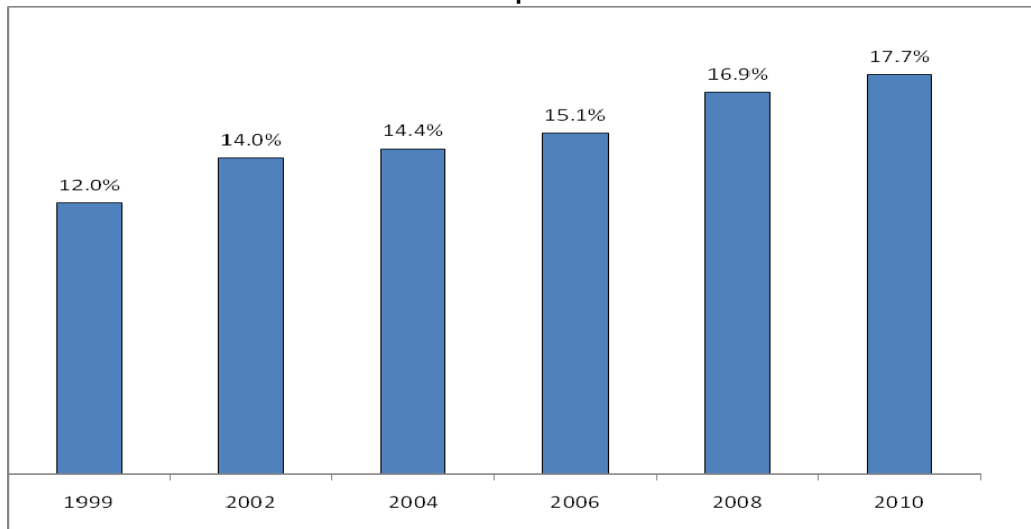


Women in Management in Canada

% of *Financial Post* 500 Board Seats Held by Women¹



% of *Financial Post* 500 Senior/Corporate Officers Who Are Women² *

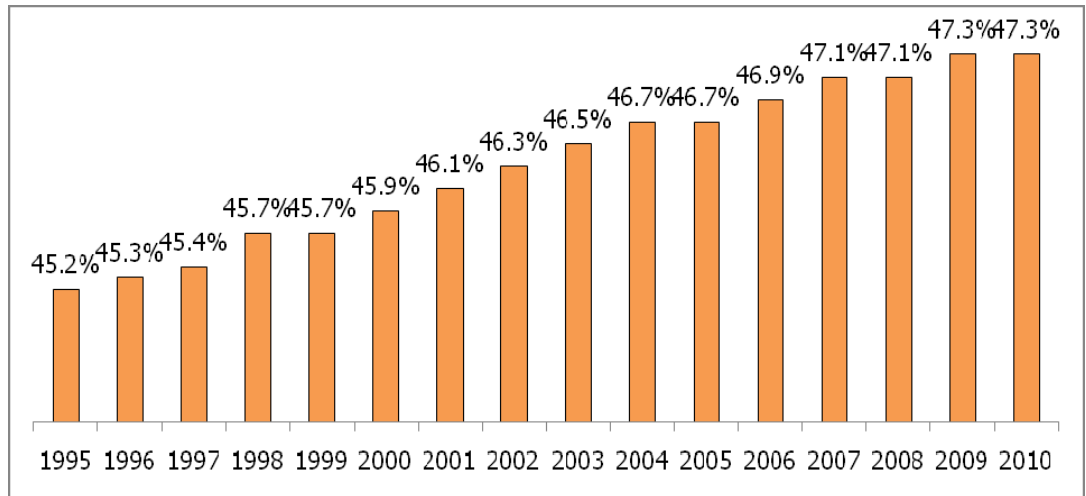


QUICK TAKES

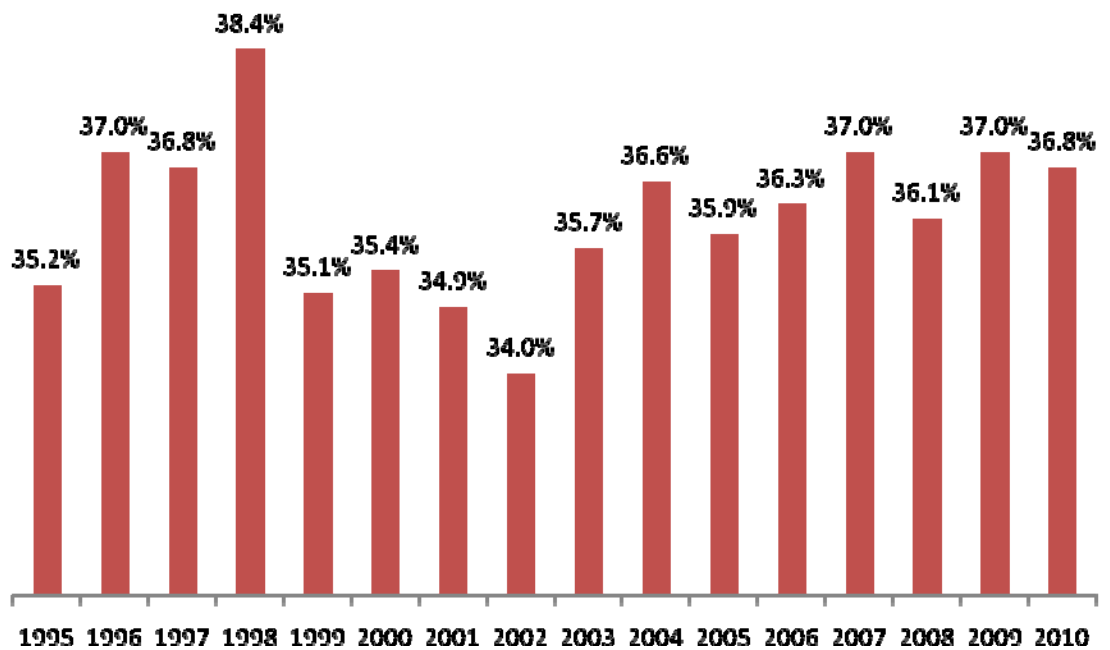
Women in Management in Canada

QUICK TAKES

% Women in the Labour Force³



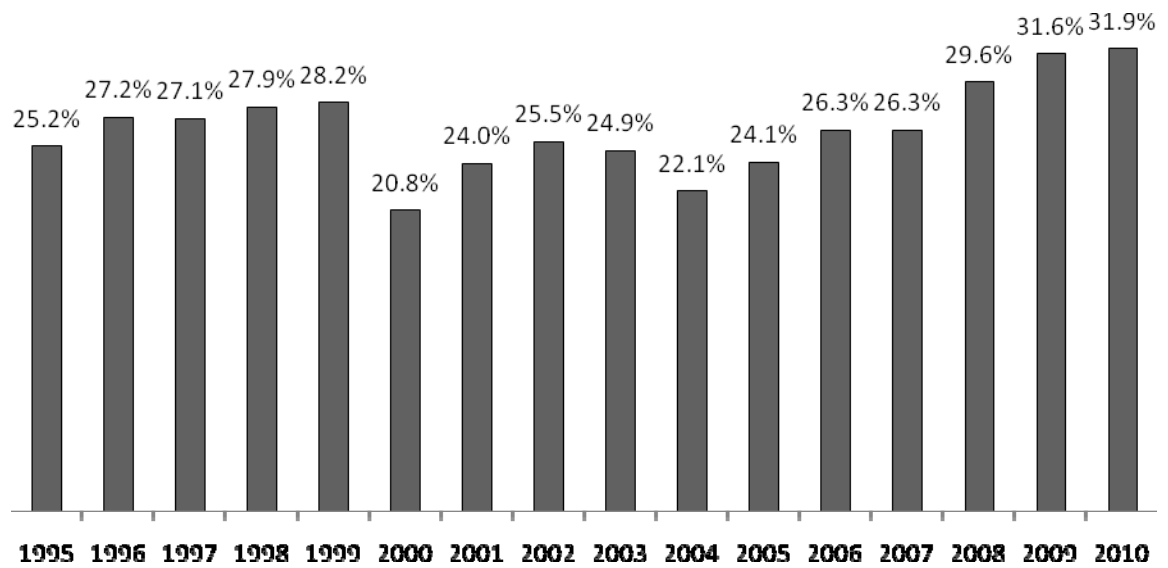
% of Women in Management Occupations⁴



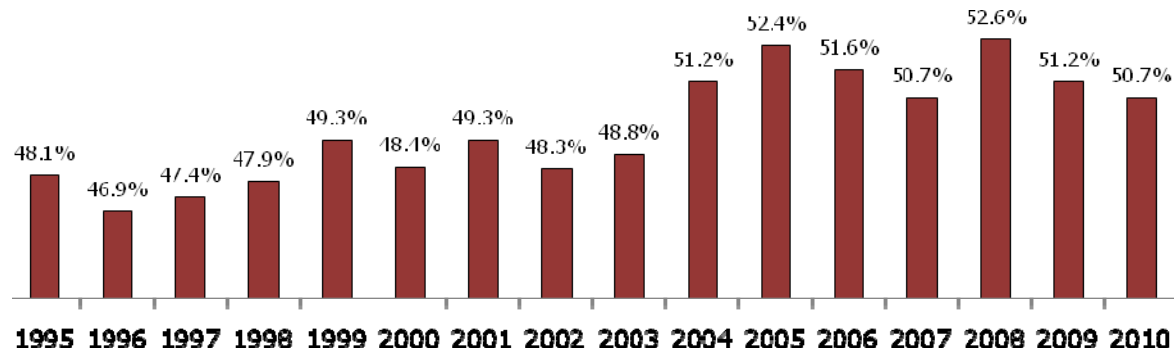
Women in Management in Canada

QUICK TAKES

% of Women in Senior Management Occupations⁵



% of Women in Professional Occupations in Business and Finance⁶



Women in Management in Canada

** The terminology was changed from “corporate officer” to “senior officer” in 2010 in an attempt to standardize across company type and provide Catalyst with more robust data. Catalyst has not found a statistically discernable difference in the overall officer population using these two terms.*

Updated March 23, 2011

SOURCES

¹ Catalyst, *2009 Catalyst Census: Financial Post 500 Women Board Directors* (2010); Catalyst, *2005 Catalyst Census of Women Board Directors of the FP 500* (2006); Catalyst, *2001 Catalyst Census of Women Board Directors of Canada* (2001).

² Catalyst, *2010 Catalyst Census: Financial Post 500 Women Senior Officers and Top Earners* (2011); Catalyst, *2008 Catalyst Census of Women Corporate Officers and Top Earners of the FP 500* (2009); Catalyst, *2006 Catalyst Census of Women Corporate Officers and Top Earners of the FP 500 in Canada* (2007); Catalyst, *2002 Census of Women Corporate Officers and Top Earners of Canada* (2003).

³ Statistics Canada, CANSIM, “Table 282-0009: Labour force survey estimates (LFS), by National Occupational Classification for Statistics (NOC-S) and sex, unadjusted for seasonality, monthly.”

⁴ Statistics Canada, CANSIM, “Table 282-0009: Labour force survey estimates (LFS), by National Occupational Classification for Statistics (NOC-S) and sex, unadjusted for seasonality, monthly.”

⁵ Statistics Canada, CANSIM, “Table 282-0009: Labour force survey estimates (LFS), by National Occupational Classification for Statistics (NOC-S) and sex, unadjusted for seasonality, monthly.”

⁶ Statistics Canada, CANSIM, “Table 282-0009: Labour force survey estimates (LFS), by National Occupational Classification for Statistics (NOC-S) and sex, unadjusted for seasonality, monthly.”